

FOR LEASE

Light Industrial Building on 1.57ac

15900 West Park Lane, Carboy Industrial Park
Saint Lucie County, FL



6,000sf Total: Shop & Offices

- Showroom with Service Counter
- 7 Offices plus Kitchen / Break Room
- 20ft Wall Ht; Insulated Roof & Walls
- Mezzanine Storage with a/c Office
- 4,200sf Shop, two 14' x 14' Roll Doors
- Single Phase 200 amp Electric Service

- 40ft Wide Concrete Apron at Building, remainder Stabilized Yard
- 6' Chain Link Security Fencing with Barbed Wire, Security Lighting on Building
- Zoning allows many varied uses including production, distribution & repair facilities
- From I-95: take Exit 131 at Orange Ave/SR68, go W 5.8 miles to Boyd Rd, then N ¼ mi to property

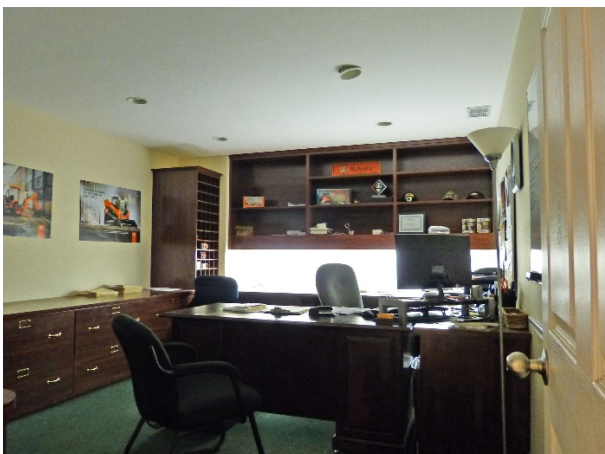


Call Us
to
Discuss
Lease
Details



mark walters
& company
real estate brokers & auctioneers

Mark's Cell: (772) 201-5650
Email: mark@waltersco.com
www.WaltersCo.com





**Viewing by
APPOINTMENT ONLY.**
Please call our office.

Saint Lucie County Statistics:

County Population (2014 estimated)..... 291,028
 Radius of Site Population...3 miles: 1,117 / 5 miles: 5,507 / 10 miles: 85,064
 Cost of Living Index 90 (US Average = 100)
 Median Household Income..... \$48,323.
 Median Resident Age..... 42 years



Mark's Cell: (772) 201-5650

Email: mark@waltersco.com

www.waltersco.com

531 South US Hwy 1, Ste B, Fort Pierce, FL 34950